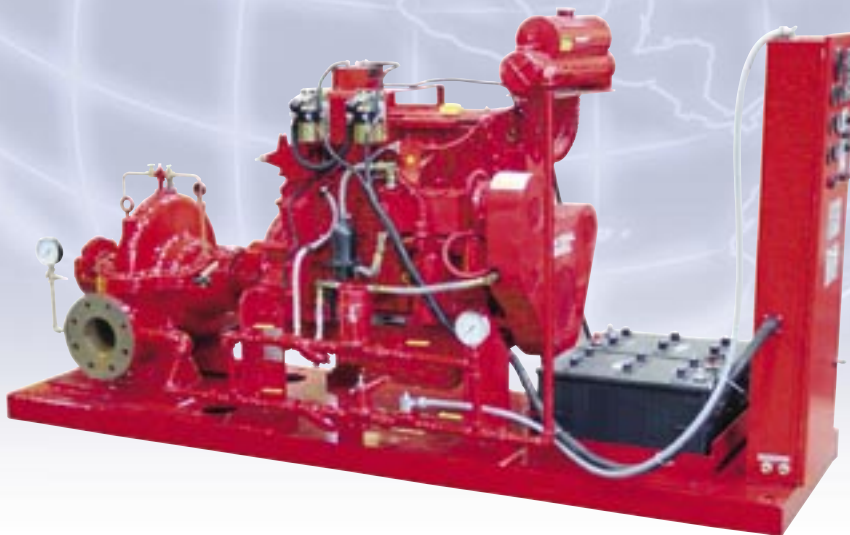


# Introducing the Patterson Engine Package

## New Combination Saves Space, Time & Material



As a combination diesel engine/ fire pump controller, the Patterson Engine Package (P.E.P.) greatly reduces the overall size and complexity of usual engine and pump controller setups.

Its smaller mounting base allows it to be used in "tight" pump rooms, where space is limited. And, its cost is lower since redundant components have been eliminated.

The integrated package also requires significantly less time and material for a contractor to install.

With the engine/controller wiring harness pre-wired to a circular locking connector that plugs into the side of the controller, incorrect field engine connections that could delay or postpone startup are eliminated.

All field connections enter the top portion of the cabinet through pre-punched conduit holes to terminal blocks. Control boards have



**LOOK  
NO  
FURTHER!**

plug-in connectors for easy removal and replacement.

The P.E.P. unit is designed specifically for use with National Diesel Corp. engines, and the engine/controller assembly is UL listed and FM approved. High intensity LED displays for 15 separate functions provide ease of viewing, long life and reliability. The built-in system pressure gauge/transducer includes a battery backup to keep the recorder functioning in the event of control power failure.

Look no further if you want to save space, time and material in your fire pump application. Call, fax or e-mail us today.



### PATTERSON PUMP COMPANY

A Subsidiary of The Gorman-Rupp Company  
Post Office Box 790 • Toccoa, Georgia 30577 U.S.A.  
(706) 886-2101 • FAX: (706) 886-0023  
E-mail: [marketing@pattersonpumps.com](mailto:marketing@pattersonpumps.com)  
[www.pattersonpumps.com](http://www.pattersonpumps.com)



Member of  
*Hydraulic*  
INSTITUTE