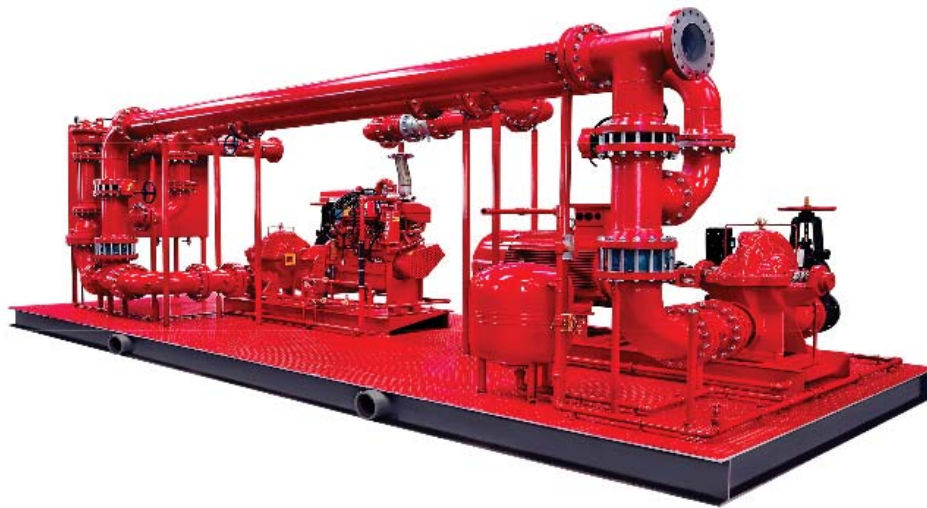


Pre-Packaged Fire Pump Systems



ISO 9001





Patterson Pump Ireland Limited is widely recognised as a leading company in fire pump technology across Europe. We provide high levels of quality, dependable equipment backed-up by hands-on training with personal service and support and realistic lead times and pricing.

Patterson Pre-packaged pump systems are available in enclosed pumphouse and open-skid arrangements and complement our existing fire pump product lines providing all the benefits of Patterson Pump's 'Sentinel'® range of horizontal split case, end suction, vertical in-line and vertical turbine fire pumps in a completely self-contained fire pump system which effectively reduces on-site labour, engineering time and installation costs. The units are delivered to site for installation on a suitable foundation prepared by the customer. After correctly mounting onto the support pad, only main water and electricity connections are required to provide a fully operational pump system, eliminating the requirement for extensive site works which are needed for conventional fire pump installations.

Patterson Pre-packaged pump systems can be designed and manufactured to various international and European standards including NFPA, FM Global, EN12845, LPS, UNI, Cephren, PAVUS, CNBOP, etc.. Full 'CE' marking and certification is available including the provision of labelling and operating instruction manuals in local European languages.

Systems are designed and manufactured indoors in a controlled environment at our ISO9001 accredited facility in Mullingar, Ireland, providing single source responsibility. All systems are hydrostatically tested. Any customer-specific requirements can be satisfied using combinations of diesel engine and/or electric motor drivers.





Systems are completely self-contained including suction and discharge lines and valving, pressure sensing lines, test line with flowmeter, fire pumps and drivers, control systems.

Pre-packaged pump houses additionally include electrical power distribution, lighting, heating and ventilation.

Many additional features are available

including relief valve, hose valve headers, internal sprinkler systems, etc..

User fluid and electrical/control interfaces are at appropriately-rated exterior ANSI or DIN flanged connections, pumphouse central electrical distribution board and remote signal connection points eliminating the need for extensive additional pipework or electrical connections to be prepared on site.

Patterson pumphouse building construction is unique from our competitors by utilising a unique channel-frame wall construction over an internal self-supporting 100mm galvanised structural steel framework which has inherent resistance to transportation stresses and, as standard, features 175km/hour wind load and 240kG/sq.m. live roof load designs.



Optional integral frame support for 1 tonne crane and upgraded construction for hurricane resistance or special sound attenuation is available.

Buildings are externally finished with a baked Kynar 500 PVDF resin-based supercoating over a Galvalume substrate and provided with a 30 year exterior colour finish warranty.

Exterior and interior colours for building walls and roof can be selected from our standard shade card.

Standard access doors are provided constructed in 1.3mm galvanised steel with solid foam core.

Standard wall insulation is in R-19 and ceiling insulation is in R-24 materials.

Walls and roof include thermal breaks for energy efficiency and internal walls are provided with a 0.75mm wall liner.



Patterson Pump Ireland Limited specialises in the design and manufacture of fire pump packages, open pre-packaged fire pump systems and pre-packaged fire pumphouse solutions using our own range of quality and reliable fire pumps. Fire protection applications are our speciality and this is fully supported by our trained team of professional sales and engineering personnel who are here to assist you with all your fire pump package requirements.

We manufacture a complete range of fire pumps up to 1135 cu m/hr (5000 US GPM) at pressures up to 29 barG (422 psi) to various international and regional standards including NFPA No 20, FM, UL, EN12845, LPS, UNI, Cepreven, PAVUS, CNBOP, etc. and CE compliant for EU installations.



Our recently-extended, purpose-built ISO9001 accredited facility in Ireland is designed around the processes required for fire pump manufacture and testing ensuring we provide the highest standards to exceed our customers' expectations.

We maintain high levels of inventory which enables us to complete the process from initial order to on-site delivery in less than industry-average times.

A full complementary line of accessories is also available including flowmeters, main relief valves, jockey pumps, reducers, increasers, waste cones, alarm panels, etc.



THE SPECIALISTS IN FIRE PUMP SYSTEM TECHNOLOGY

PATTERSON PUMP IRELAND LIMITED

Unit 1, Ardmore IDA Marlinstown
Business and Technology Park
Mullingar, Co. Westmeath
Ireland N91 R762
Tel +353 (0) 44 934 7078
E-Mail: info@ie.pattersonpumps.com
Website: www.ei.pattersonpumps.com